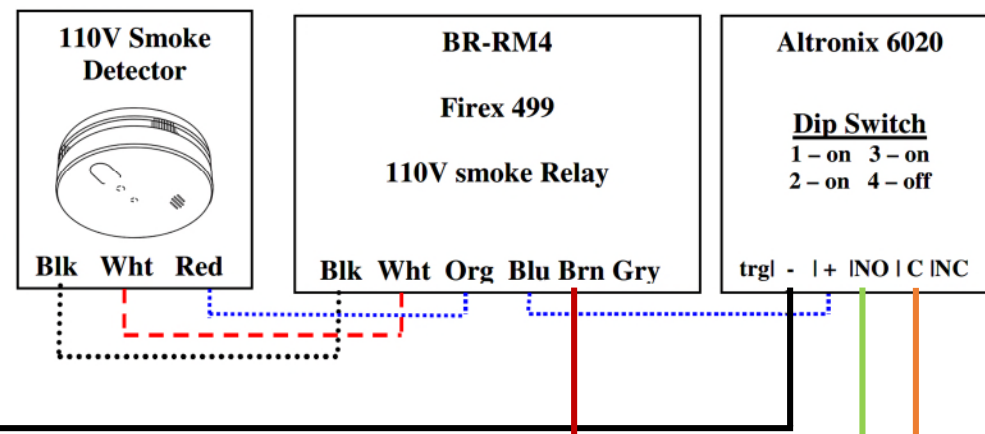
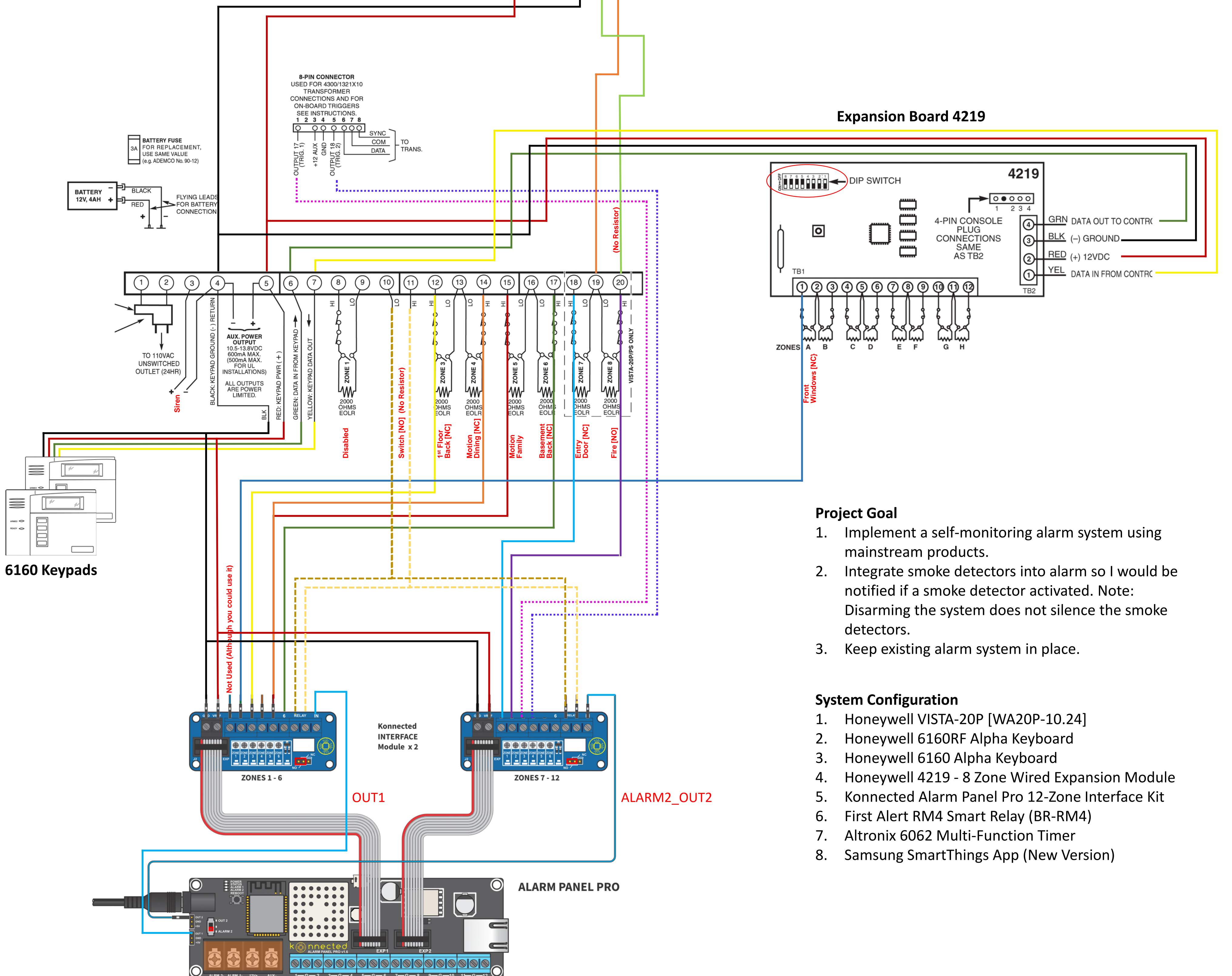


Honeywell VISTA-20P



DISCLAIMER: The information in this PDF is for general informational purposes only. I make no representation or warranty, express or implied. Your use of this information is solely at your own risk. This PDF may contain links to third party content, which I do not warrant, endorse, or assume liability for.



Project Goal

1. Implement a self-monitoring alarm system using mainstream products.
2. Integrate smoke detectors into alarm so I would be notified if a smoke detector activated. Note: Disarming the system does not silence the smoke detectors.
3. Keep existing alarm system in place.

System Configuration

1. Honeywell VISTA-20P [WA20P-10.24]
2. Honeywell 6160RF Alpha Keyboard
3. Honeywell 6160 Alpha Keyboard
4. Honeywell 4219 - 8 Zone Wired Expansion Module
5. Konnected Alarm Panel Pro 12-Zone Interface Kit
6. First Alert RM4 Smart Relay (BR-RM4)
7. Altronic 6062 Multi-Function Timer
8. Samsung SmartThings App (New Version)

Follow these instructions carefully.

Honeywell/Ademco VISTA Series Setup & Configuration

<https://help.konnected.io/support/solutions/articles/32000028776-honeywell-ademco-vista-series-setup-configuration>

STEP 1

Program Triggers 1 and 2 to indicate armed/disarmed status and alarm triggered status

- Connect the first pin (indicated as OUTPUT 17 / TRIG 1 in the diagram) and the fourth pin (indicated as OUTPUT 18 / TRIG 2 in the diagram) to two zones on the Connected Interface module with female-to-male jumper wires.
- Enter panel programming mode using the alpha keypad:
[INSTALLER CODE] 800 *
- Set both outputs 17 and 18 to normally low with the following sequence:
*79 > enter the output mapping menu
17* > output #17
1* > set to normally low
18* > output #18
1* > set to normally low
00 > save and exit
- Program output 17 to trigger high when the system is set in armed/stay:
*80 > enter the output programming menu
01* > first program slot
* > continue
2* > activated by zone type
20* > zone type 20 means arm-stay
0* > any partition
2* > stay closed
17* > output #17
- Program output 17 to also trigger high when the system is set in armed/away:
* > return to output programming menu
02* > second program slot
* > continue
2* > activated by zone type
21* > zone type 21 means arm-away
0* > any partition
2* > stay closed
17* > output #17
- Now, program output 17 return to low when the system is disarmed:
* > return to output programming menu
03* > third program slot
* > continue
2* > activated by zone type
22* > zone type 22 means disarmed
0* > any partition
0* > open
17* > output #17
- Moving on to the second output, program output 18 to trigger high when there is an alarm:
* > return to output programming menu
04* > fourth program slot
* > continue
2* > activated by zone type
33* > zone type 33 means burglar alarm
0* > any partition
2* > stay closed
18* > output #18
- Finally, program output 18 to return low when the alarm is disarmed:
* > return to output programming menu
05* > fifth program slot
* > continue
2* > activated by zone type
22* > zone type 22 means disarmed
0* > any partition
0* > open
18* > output #18
- When finished programming, exit:
00 > exit the menu
*99 > exit installer mode

STEP 2

Programming the Keyswitch Zone

For this example, we'll use Zone 2 as our keyswitch zone, but you can use any available zone.

- Enter panel programming mode using the alpha keypad:
[INSTALLER CODE] 800 *
- Program Zone 2 as a keyswitch zone.
*56 > enter zone programming mode
0 > no confirmation
08* > select zone 2.
* > continue
77* > zone type 77 means keyswitch
1* > partition 1
* > skip report code
1* > (only on zones 2-8) set hardwire type to 2 (Normally Open) to not need a resistor
* > confirm response time
* > confirm summary
* > skip program alpha
- When finished programming, exit:
00 > exit the menu
*99 > exit installer mode

STEP 3

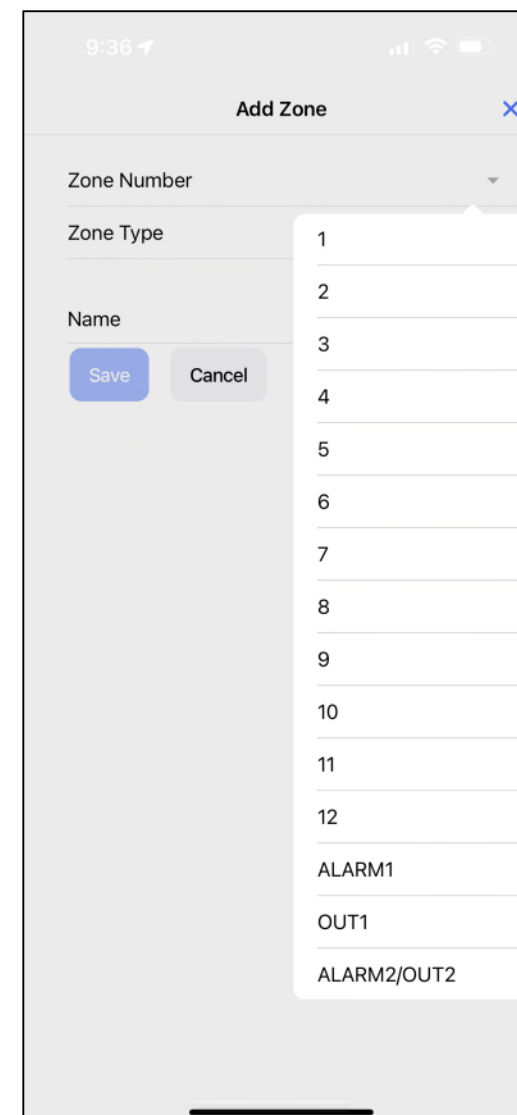
In the Konnected App
Screen Shots from v 1.1.1.



Navigate to Manage Zones and click "+" to add a new zone

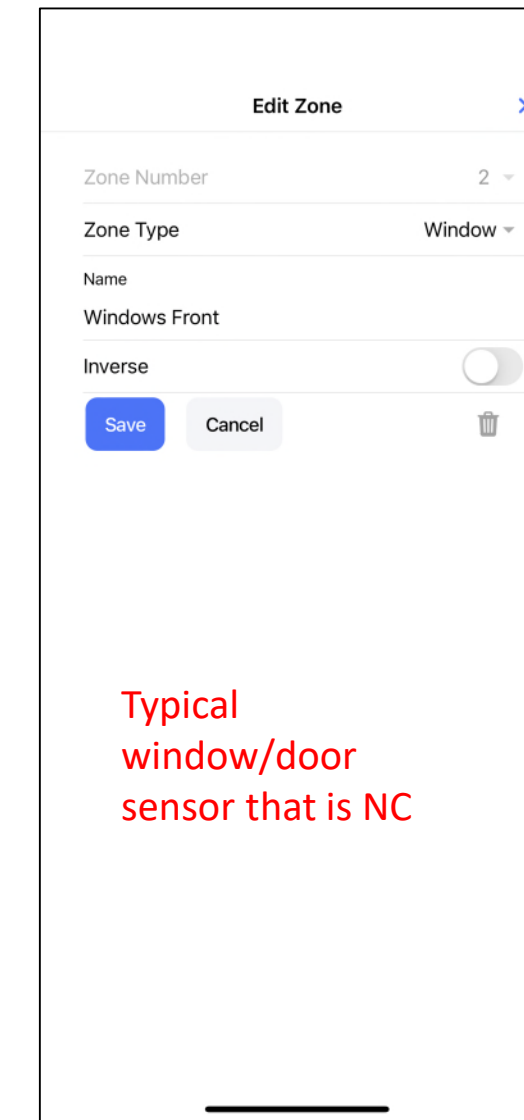
Note: I purchased the Konnected Alarm Panel Pro 12-Zone Interface Kit. This is why there are 12 zones listed along with the relays

List of Zones to Add

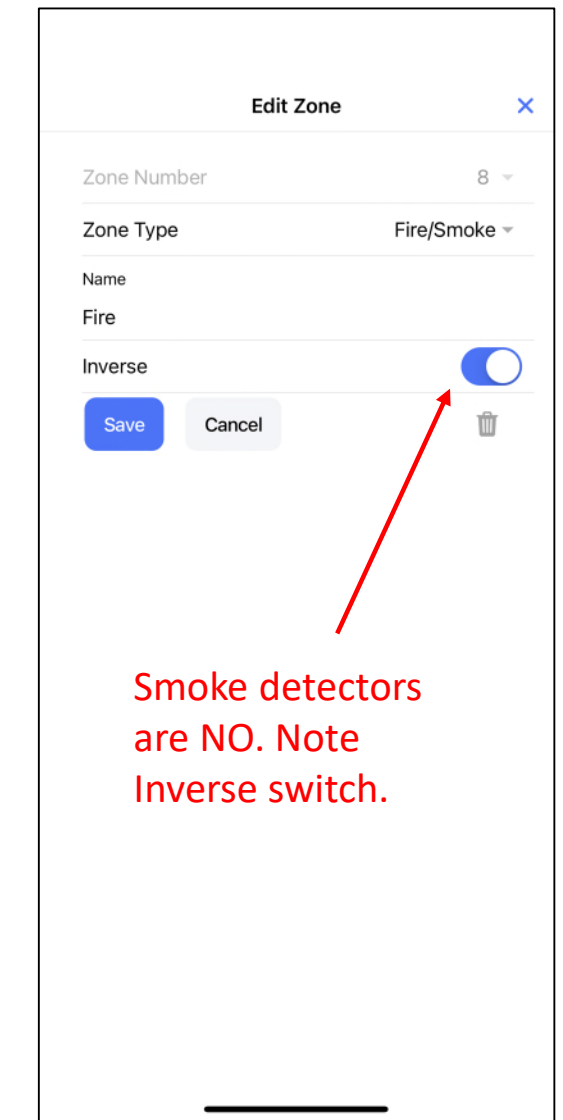


STEP 3 (Cont.)

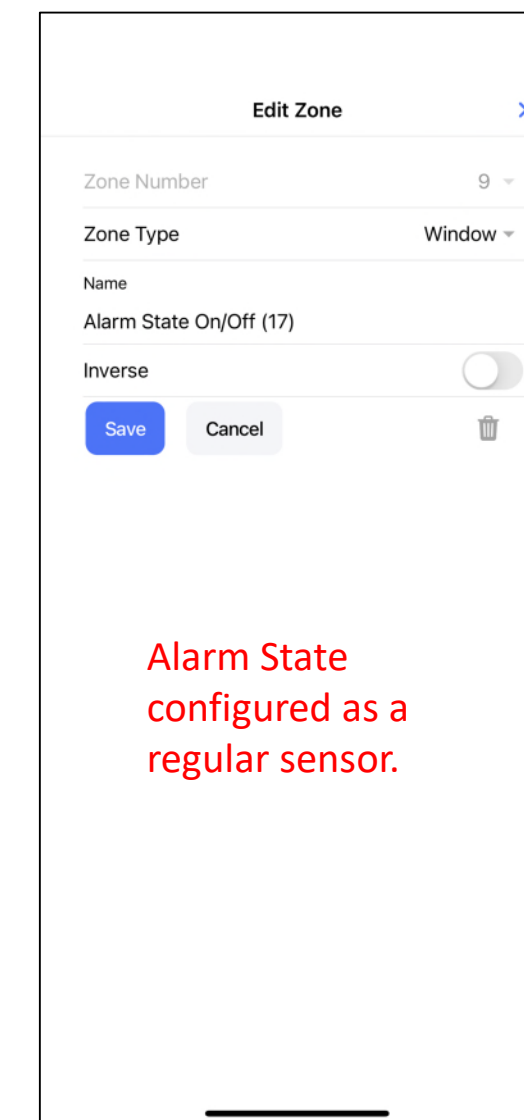
Setting up the Zones in Konnected App



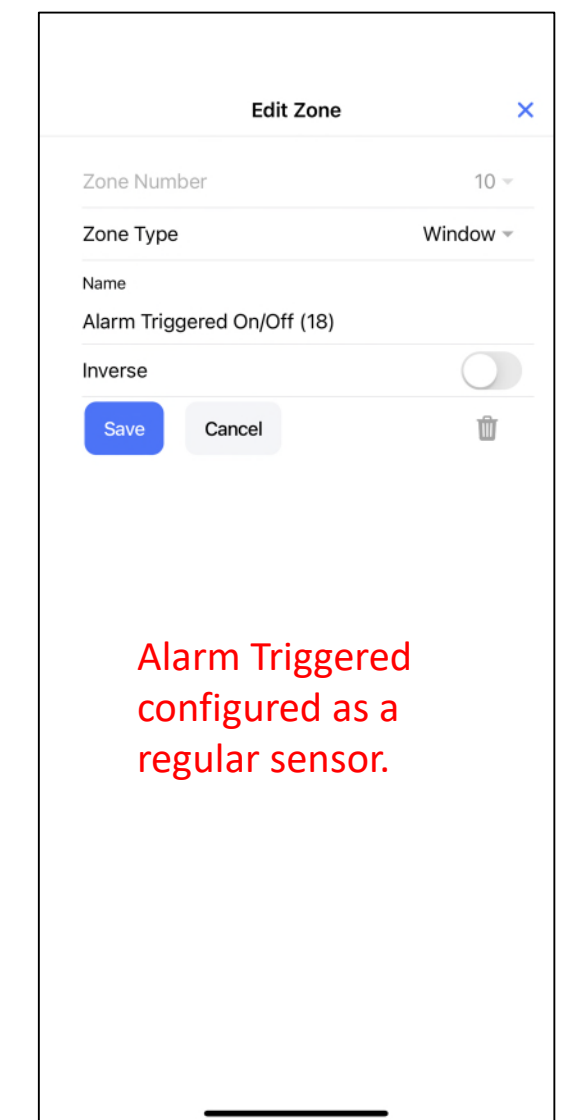
Typical window/door sensor that is NC



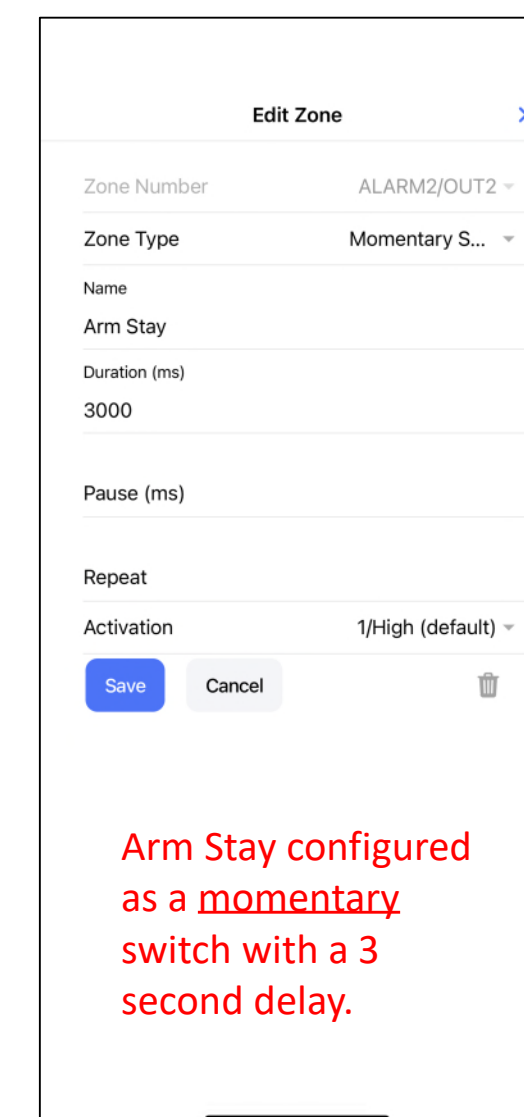
Smoke detectors are NO. Note Inverse switch.



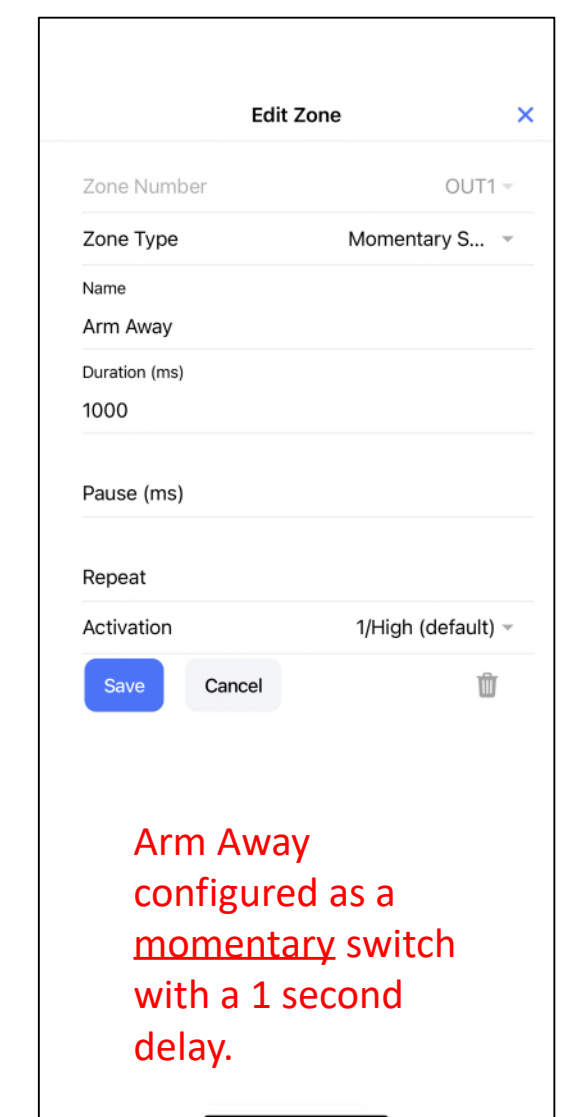
Alarm State configured as a regular sensor.



Alarm Triggered configured as a regular sensor.



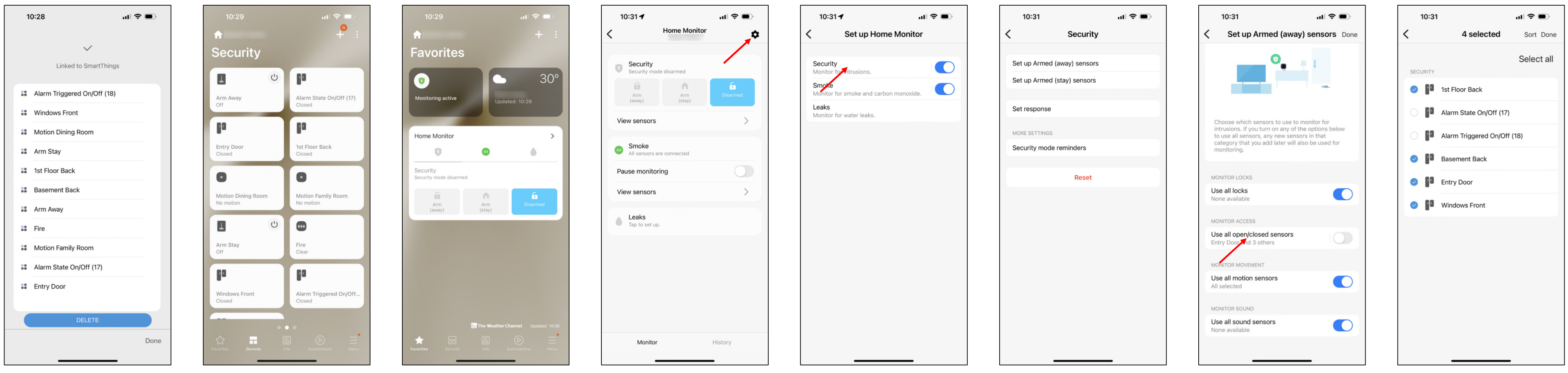
Arm Stay configured as a momentary switch with a 3 second delay.



Arm Away configured as a momentary switch with a 1 second delay.

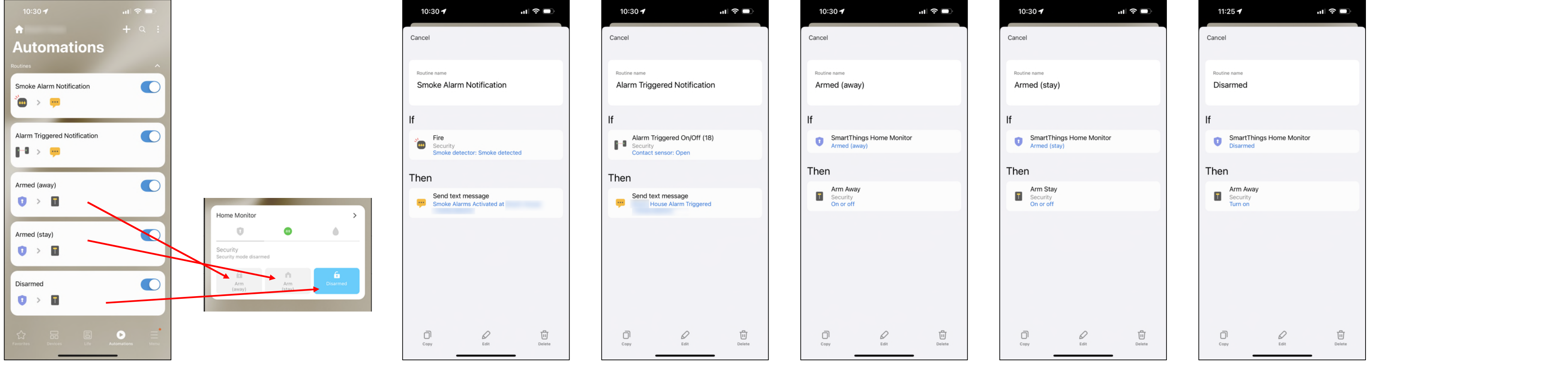
STEP 4 SmartThings Scroll to Devices and scroll to bottom and look for Konnected. Follow steps to link the account.

- 1.) List of all zones displayed after linking the account
- 2.) All zones setup in Konnected should display
- 3.) Look for Home Monitor. You need to go in and assign sensors for Arming
- 4.) Go to settings
- 5.) Select Security
- 6.) Select Armed Away sensors (follow same steps 7. and 8. for Armed Stay)
- 7.) Scroll down to Use all open/closed sensors and select. (Slide switch to Left so grayed out)
- 8.) Select sensors associated with Armed Away. (Smoke are on all the time and are not shown in this menu)



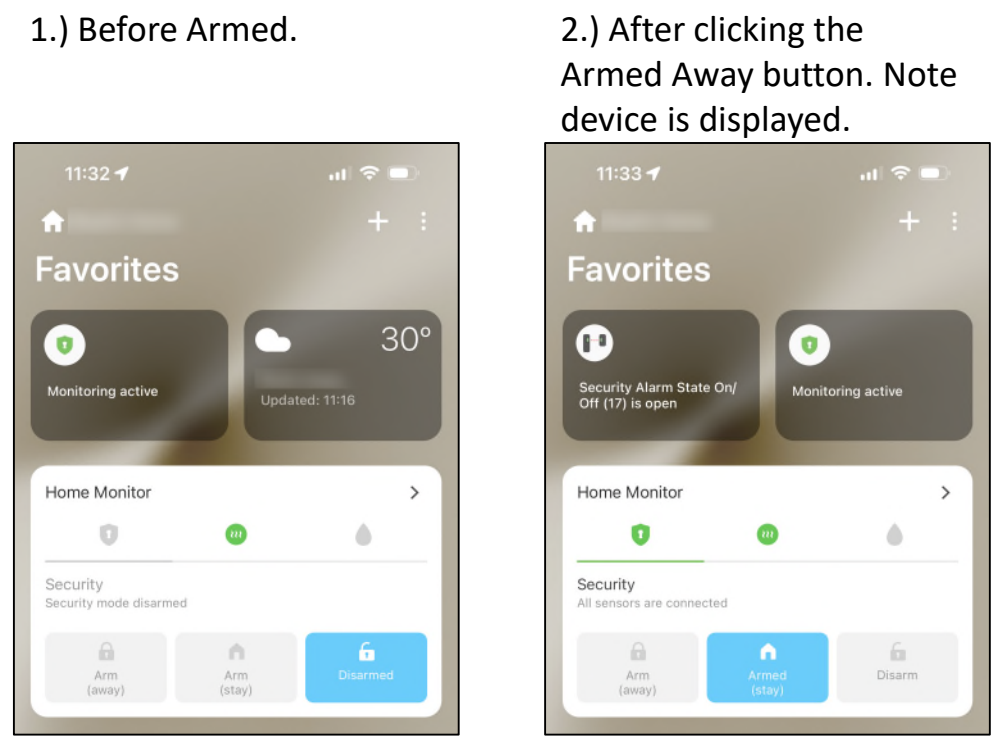
Program the following Automations

- 1.) I set up alerts for when smoke detectors go off, and for when the alarm is triggered. The other 3 automations allow you to arm and disarm from Home Monitor Buttons.
- 2.) Settings for Smoke Alert
- 3.) Settings for Alarm Triggered
- 4.) Settings for Alarm (away)
- 5.) Settings for Alarm (stay)
- 6.) Settings for Disarmed. NOTE: Executing the Arm Stay or Away will work. used away as it is a 1 second signal.



STEP 5

Give it a try!!



Some NOTES:

- 1) If the alarm has been triggered, the triggered device will show and you should get text alerts. You can also visit History in the Samsung app to see all activity.
- 2) Shortcomings of Home Monitor I am still trying to find a solution for: If Alarm Trips Example: Click Armed Stay, trip alarm, and click disarm to silence alarm. If you click Armed Stay in Home Monitor, the action clears the fault and the Armed Stay button goes blue. But the alarm does not arm. So if you click Disarm, that activates the Armed Stay because it uses the same button to Arm the alarm. The only way to get the button back in sync is to go to devices and Click the Armed Stay device. The Automations in Smart Things can't do any nested IF/THEN conditions to test out. Anybody have a solution? Looking to clear fault codes maybe through a programmed relay??